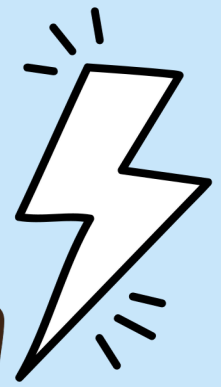
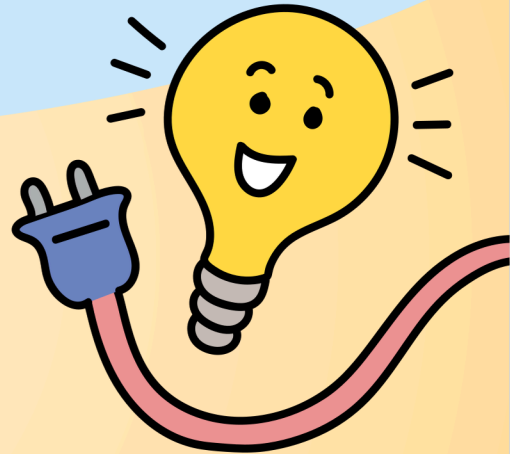




LUPE LEARNS



ELECTRICITY AND LIGHT



1. FIX THE LAMP !
2. FIX THE WIRE!
3. PLUG IT IN!
4. SPOT THE CHANGES!
5. COLOR ALL PAGES!
6. LEARN!
7. HAVE FUN!

HI, LUPE! LET'S LEARN TOGETHER!

MY NAME IS _____ !

**SMALL STEPS TODAY BRIGHT
FUTURE TOMORROW**



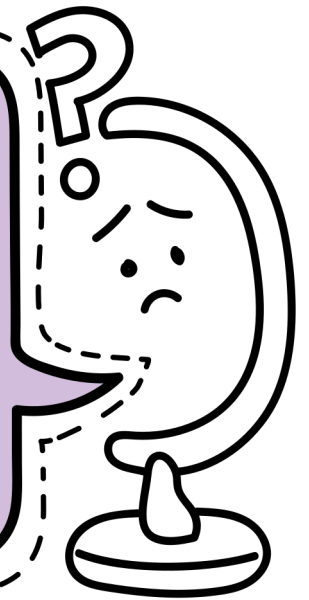
**@2025 LUPE ENERGY.
ALL RIGHTS RESERVED.**

LUPE LEARNS

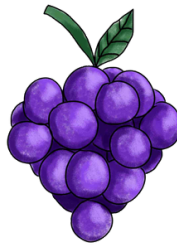
HOW TO REPLACE THE BULB



I NEED SOMETHING TO SHINE, COLOR THE ITEMS BELOW AND CIRCLE WHICH HELP ME TO SHINE YELLOW & BRIGHT!



WHY DO WE NEED THE BULB TO BE CONNECTED?



WORK SAFELY!

LIGHTBULBS MAKE

LIGHT! INSIDE IS A TINY WIRE THAT GETS SUPER HOT WHEN ELECTRICITY FLOWS THROUGH IT TO MAKE IT GLOW.

IF IT DOESN'T FIT EASILY, IT IS NOT THE RIGHT BULB.

THE TIGHT BULB HELP IT GLOW PROPERLY AND

LUPE LEARNS

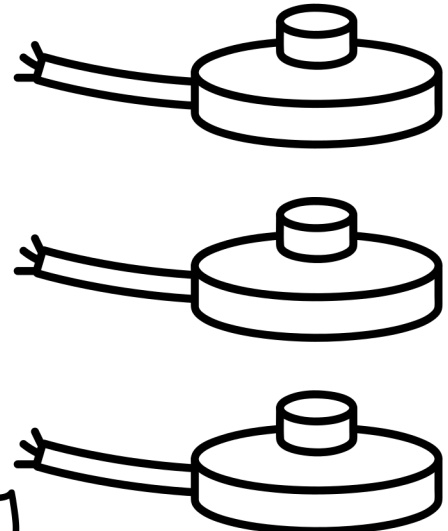
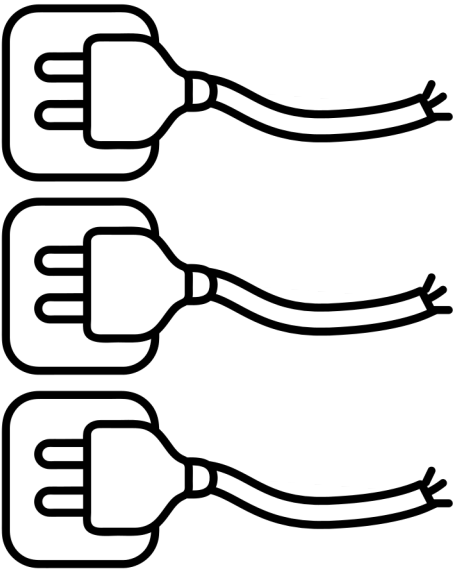
TO FIX THE WIRE



OH NO!
THE WIRE IS
CUT!

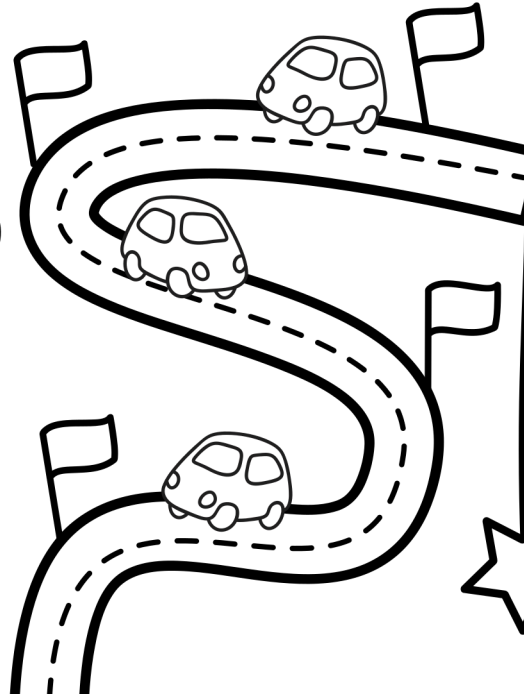


USE YOUR FAVOURITE COLOR
TO CONNECT THE WIRE AND
TURN ON THE LIGHT!



WHY DO WE TO
CONNECT THE CABLE?

ELECTRICITY NEEDS A
CLEAR, UNBROKEN PATH TO
MOVE, JUST LIKE A RACE
CAR NEEDS A TRACK!



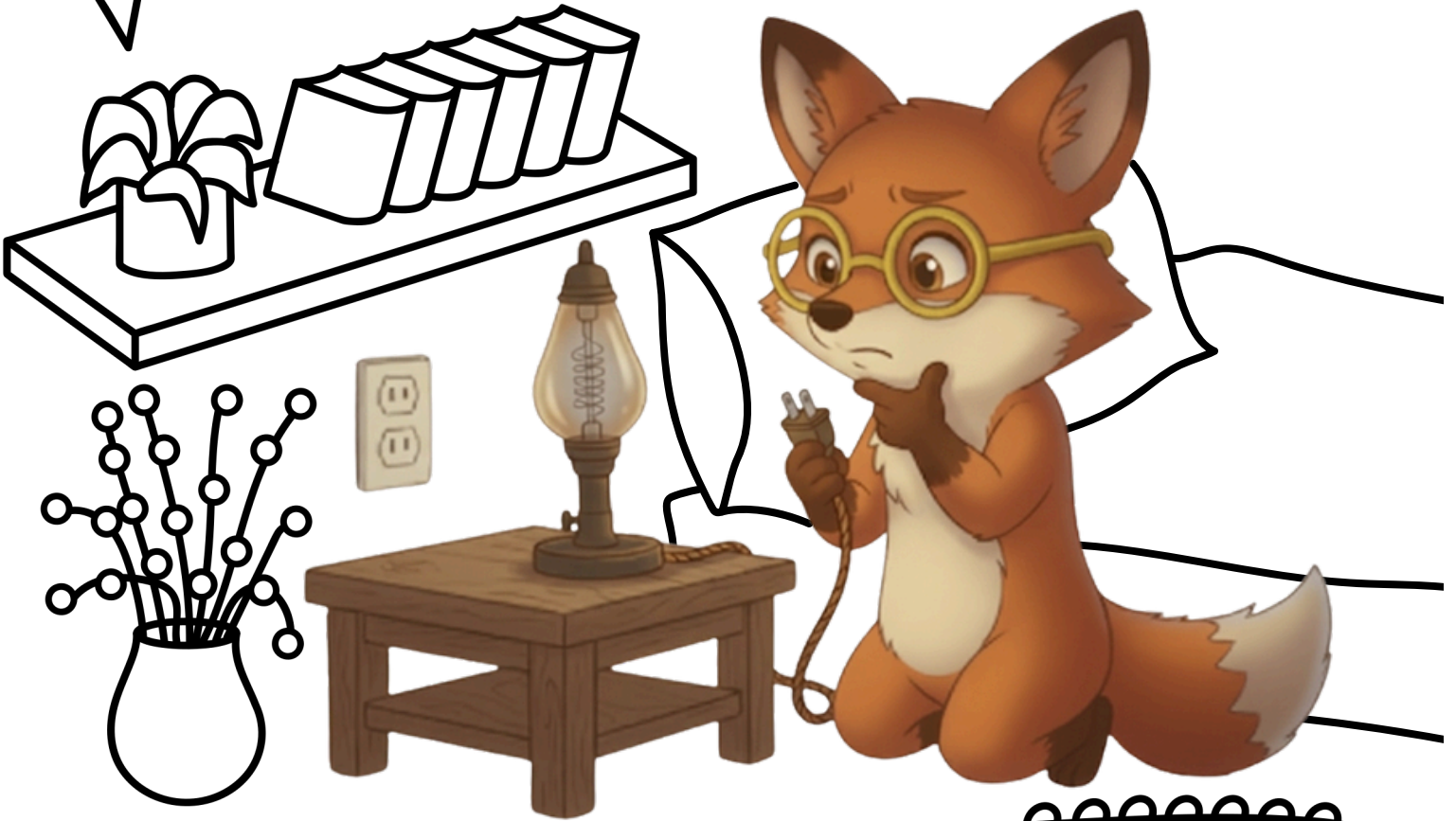
LUPE'S BRIGHT TIP
IF A WIRE IS DAMAGED,
ELECTRICITY CAN'T FLOW
PROPERLY AND IT
BECOMES UNSAFE!

LUPE LEARNS

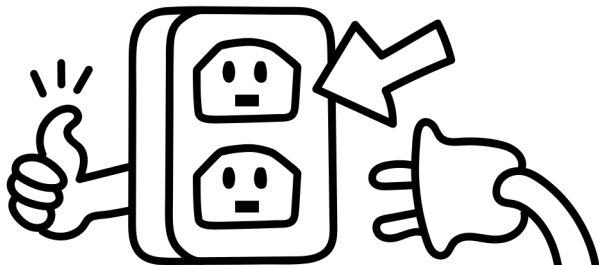
TO PLUG IT IN TO THE OUTLET

**YOU DID IT!
YOU REPLACED THE BULB AND FIXED
THE WIRE, NOW LET'S FIND THE
WALL PLUG.**

**LOOK AT THE THE PICTURE OF LUPE. WHEN YOU FIND THE WALL
PLUG, CIRCLE IT ON THE PICTURE TO THE RIGHT!**



**WHY DO
WE NEED TO
PLUG IN OUR
LIGHTBULB?**



**TO GET ELECTRICITY FROM THE WALL OUTLET!
IT'S WHERE POWER IS FILLED AND WAITS FOR
YOU TO USE!**

LUPE'S BRIGHT TIP

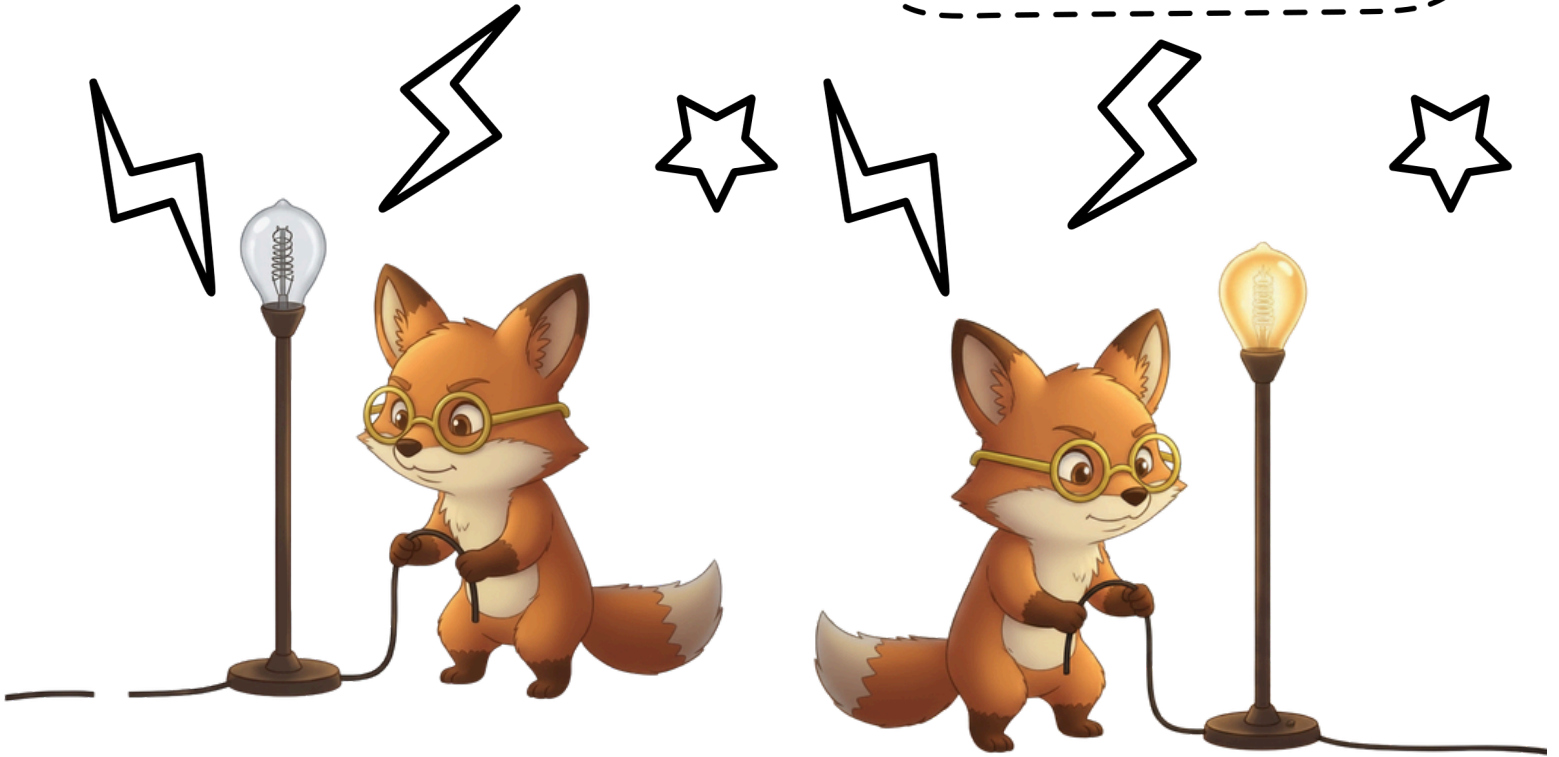
**OUTLETS ARE SAFE FOR PLUGS,
BUT NOT FOR FINGERS,
BECAUSE ELECTRICITY CAN
HURT YOU.**

LUPE LEARNS

TO SPOT THE CHANGES!



HEY BUDDY!
 OUR LAMP SHOULD NOW BE BRIGHT AND YELLOW!
 CAN YOU FIND ALL THE HIDDEN DIFFERENCES BETWEEN THE TWO LUPES?



LET'S TURN ON THE LIGHT!

FILL IN THE MISSING LETTERS!

		E		T		I		I	T
--	--	---	--	---	--	---	--	---	---



SPARK YOUR BRAIN!

WHY DO WE SAVE ENERGY?

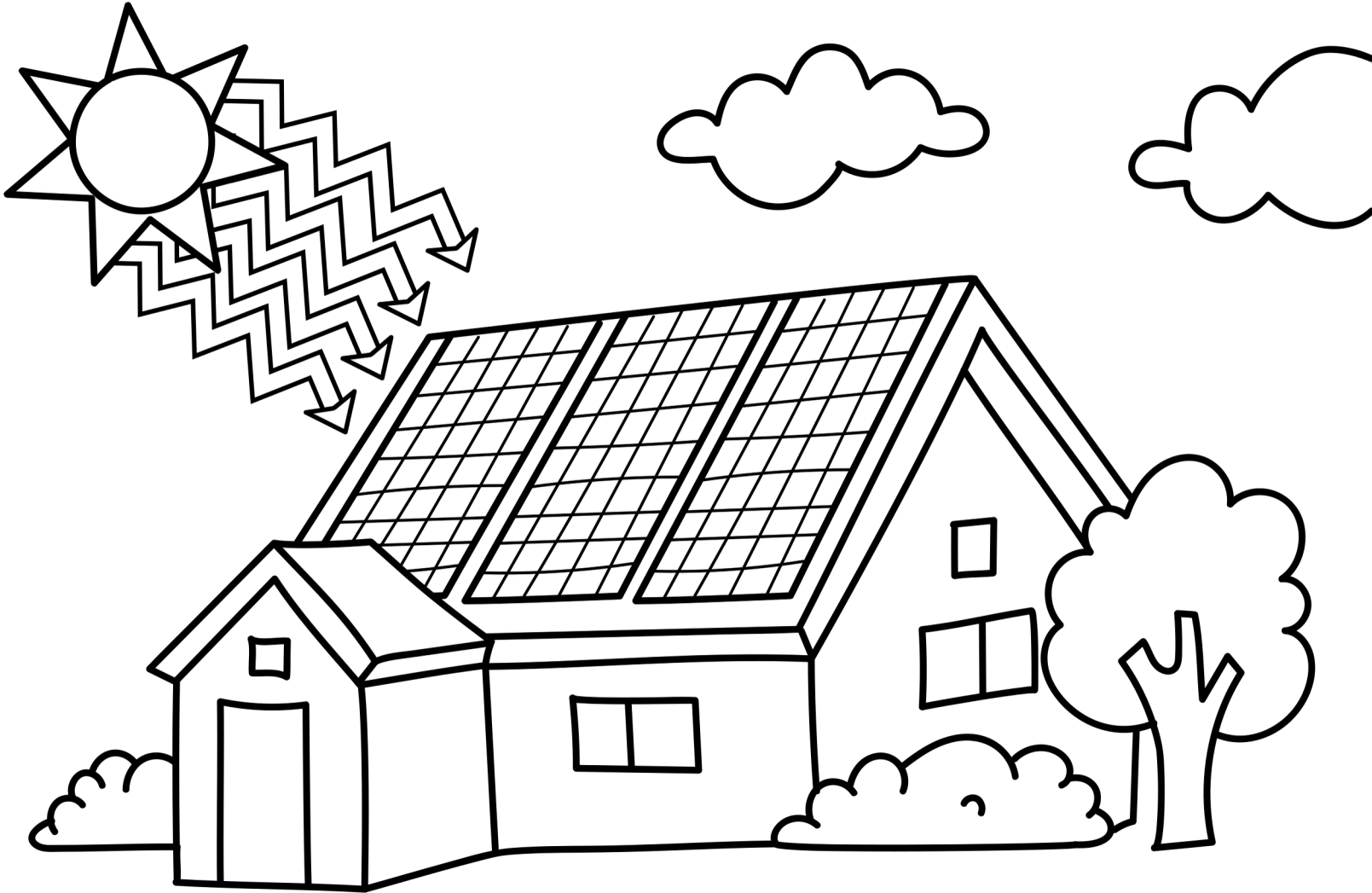
LUPE'S BRIGHT TIP

AS ELECTRICITY MOVES, SOME ENERGY ESCAPES AS HEAT, SO NOT ALL OF IT BECOMES USEFUL HEAT.



LUPE LEARNS

ELECTRICITY AND LIGHT



WHAT IS ONE WAY YOU CAN SAVE ENERGY AT HOME?
